


# Towards a new RSIS



 **Ramsar Sites Information Service** Log in

Total Ramsar Sites: 2186 covering 208'449'277 hectares

[ABOUT](#) [EXPLORE SITES](#) [MANAGE MY SITES](#)

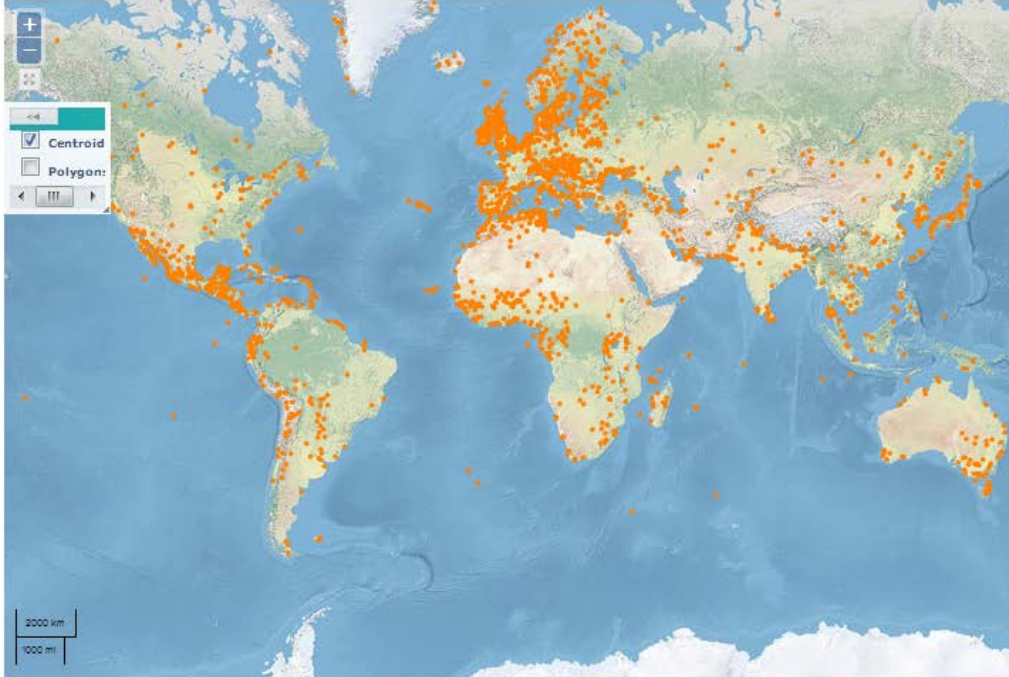
**SEARCH FOR A RAMSAR SITE**

[Reset!](#)

**EXPLORE BY FILTERS**

- ✓ Region/country
- ✓ Ramsar Criteria
- ✓ Designation Date
- ✓ Wetland Type
- ✓ Ecosystem Services
- ✓ Statutory Designation Taxonomy
- ✓ Threats
- ✓ Management Plan Available
- ✓ Max Elevation
- ✓ Picture Available?
- ✓ Sites On Montreux Record?

**Map** **List**



Map showing the distribution of Ramsar sites globally, marked by orange dots. The map includes a legend for Centroid (checked) and Polygon (unchecked). A scale bar indicates 2000 km and 1000 mi.

Choose map: **Natural Earth** |  | [Download data \(shapefile\)](#) | [Download map \(pdf\)](#)

Alexia Dufour  
Regional Affairs Officer

STRP 18, 8 September 2014

# Where are we today?



## Launch of the project

- Jul 12: COP11, adoption of Resolution XI.8

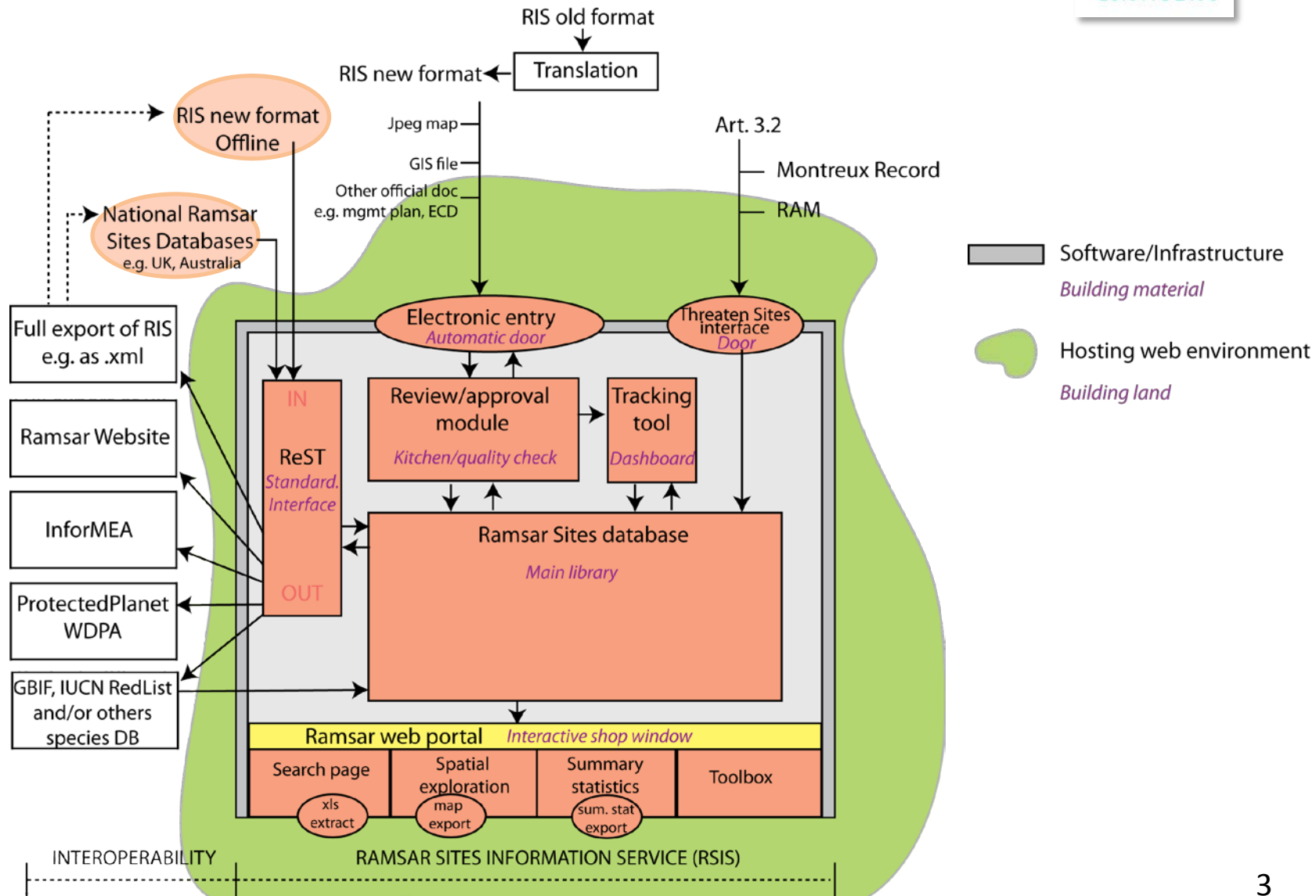
## Project definition and selection of vendor

- Dec 12-Jan 13: Definition of specifications, dissemination of RFP
- May 13: Selection of UNEP/DEWA GRID
- Summer 13: Contract negotiation and signature

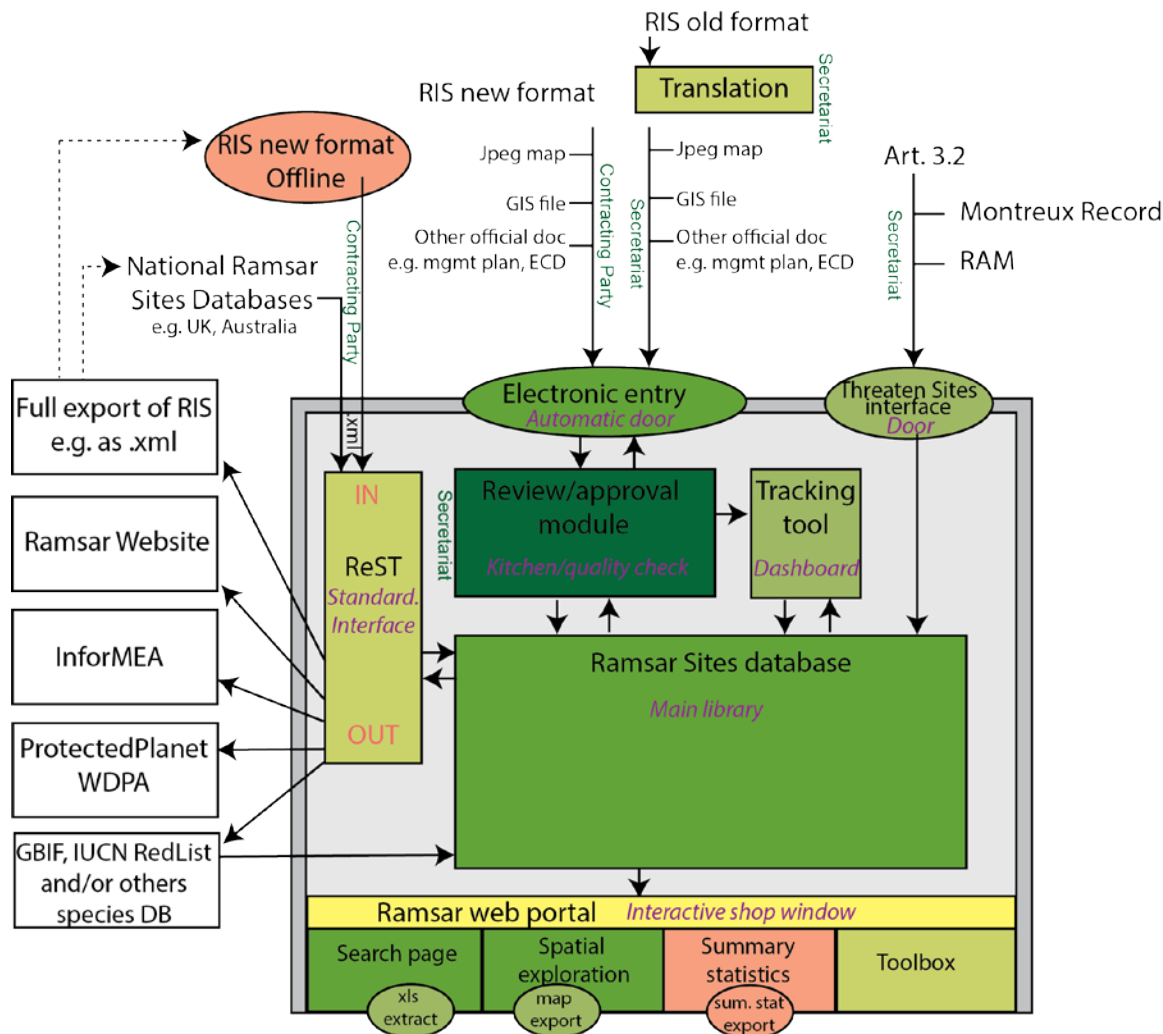
## Implementation phase

- Feb 14: RSIS v. 0.7 1<sup>st</sup> internal testing phase
- May 14: RSIS v. 0.9 2<sup>nd</sup> testing phase
- Aug 14: RSIS v. 0.9.1 “real use” by CPs and Secretariat, EN only
- Nov 14: RSIS v. 0.9.3 release of FR and SP versions

# Reminder: plan of the new RS data house



# RSIS version 0.7



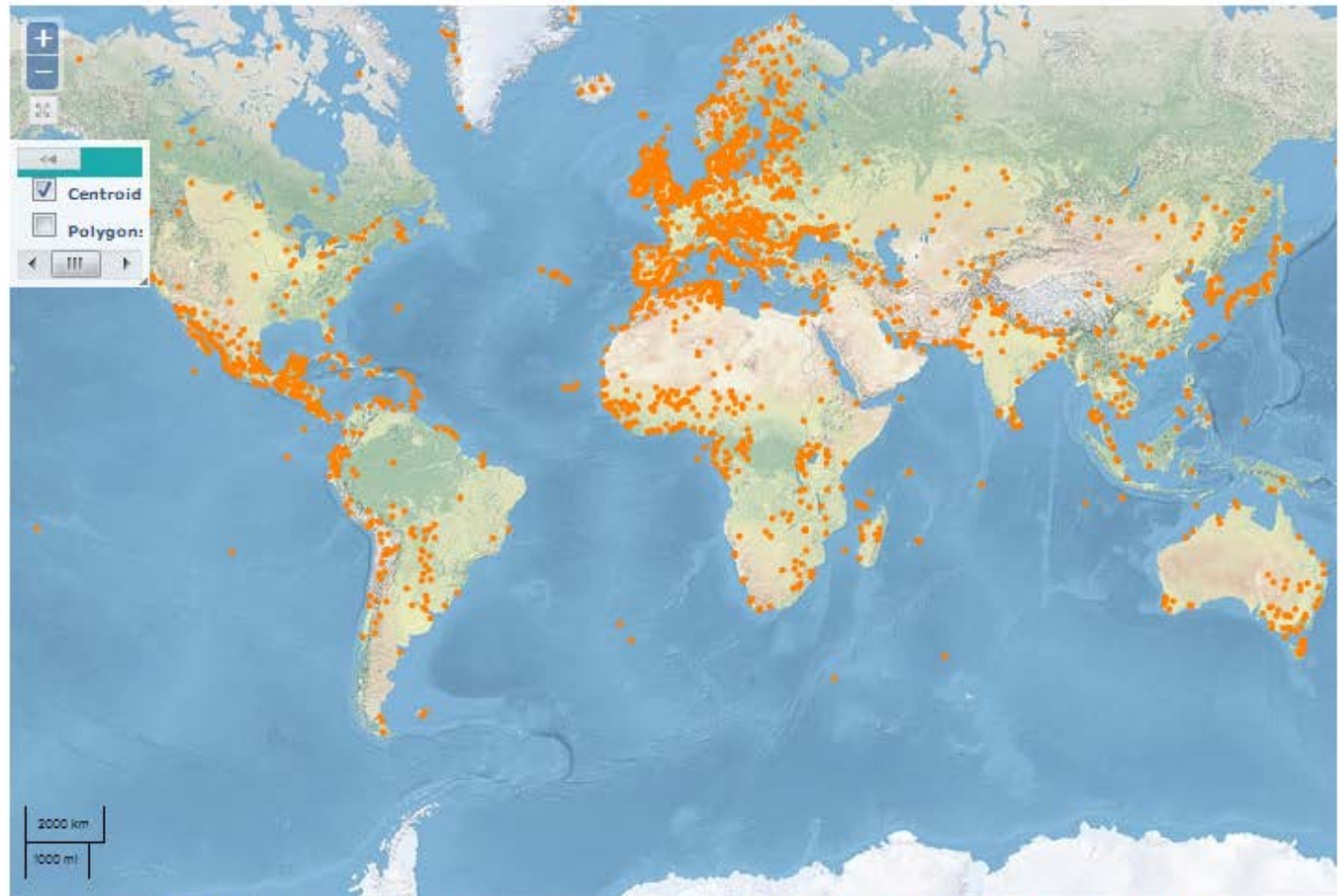




Total Ramsar Sites: 2186 covering 208'449'277 hectares

Map

List



Choose map: Natural Earth

Search for a location...

[Download data \(shapefile\)](#) | [Download map \(pdf\)](#)



## VALLÉE DE LA HAUTE-SÛRE

**Country:** Belgium

**Site number:** 1'407

**Area:** 29'000 hectares

**Designation date:** 24-03-2003

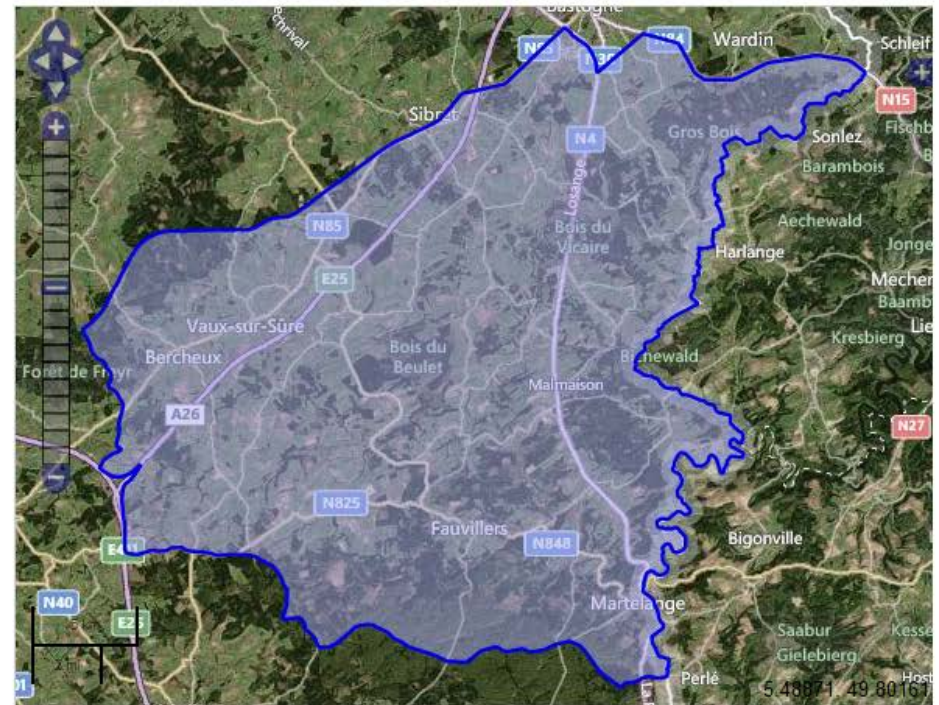
**Coordinates:** 49°52'60"N 6°0'0"E



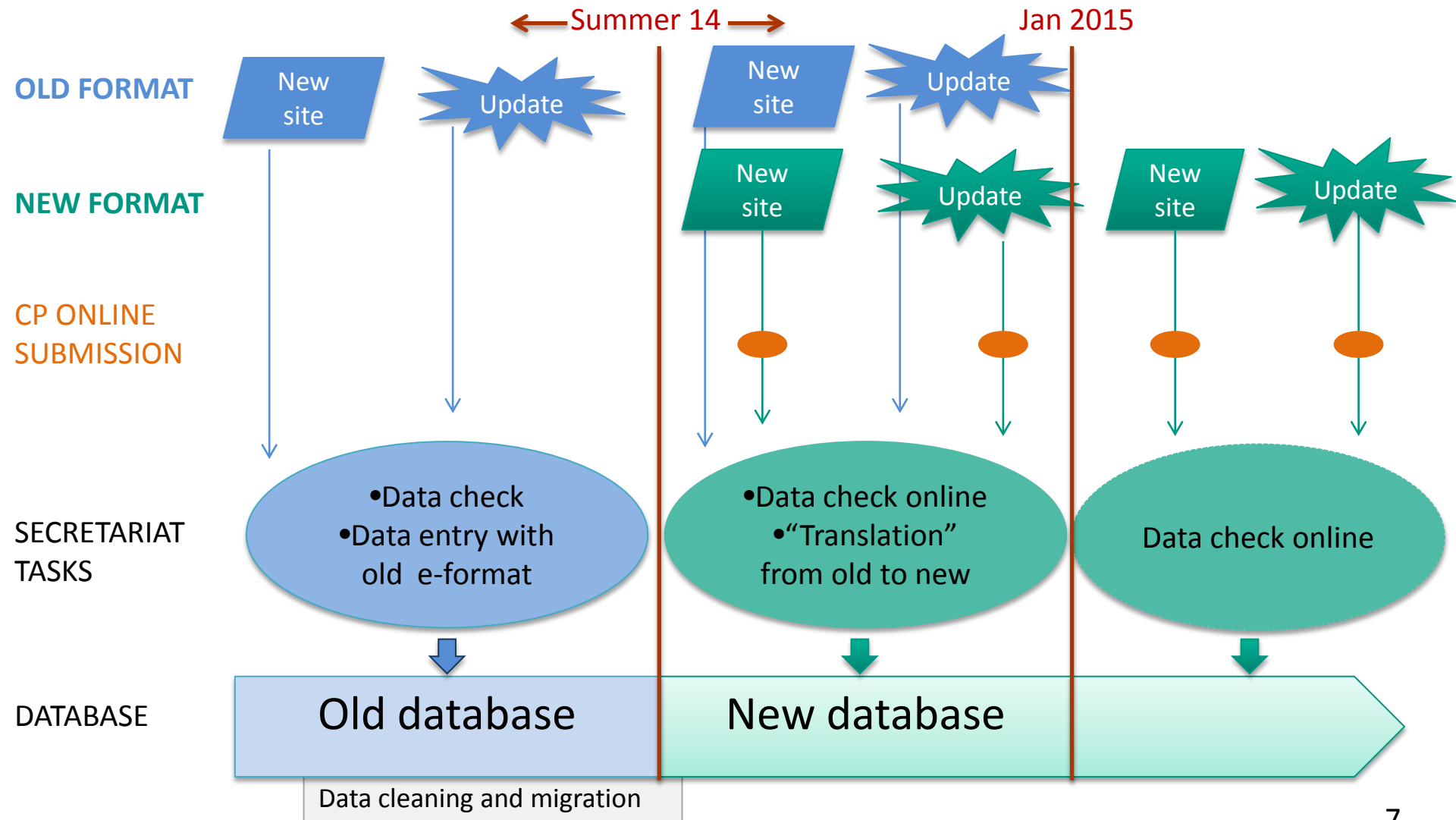
Overview

Downloads

Vallée de la Haute-Sûre. 24/03/03; transboundary Ramsar Site: 29,000 ha Belgium (région Wallone), 16,900 ha Luxembourg; total area: 45,900 ha; 49°53'N 005°51' E; Nature Park (both countries), SPA (Belgium). A complex of forested wetlands, acidic fen and peatlands, wet grasslands, reed beds, springs, rural zones and a barrage with a water storage area of 380 ha in the Luxembourg part. The site supports internationally threatened species, especially the otter *Lutra lutra*, the bats *Plecotus auritus* and *Pipistrellus pipistrellus*, the badger *Meles meles* and the freshwater pearl mussel *Margaritefera margaritifera*. It shows a high biodiversity in both animal and plant species - besides the typical wetland plants such as *Comarum palustris*, *Menyanthes trifoliata*, *Eriophorum angustifolium*, the rare *Epipactis palustris* and *Pedicularis palustris* are present as well. The site is of stopover and nesting importance for many birds, notably the Black Stork, *Ciconia nigra*. Some 20 species of fish have been identified within the site, and a special construction exists to enable the fish to pass the main barrage. The barrage regulates the rises in water level and provides an important part of Luxembourg's population



# Broad implications for process





An aerial photograph showing a wide, winding river with a muddy brown color, meandering through a vast, dense green forest. The river forms several large loops and ovals, creating a complex pattern. The forest is a vibrant green, and the overall scene is captured from a high angle, looking down on the landscape.

Thanks for your attention!