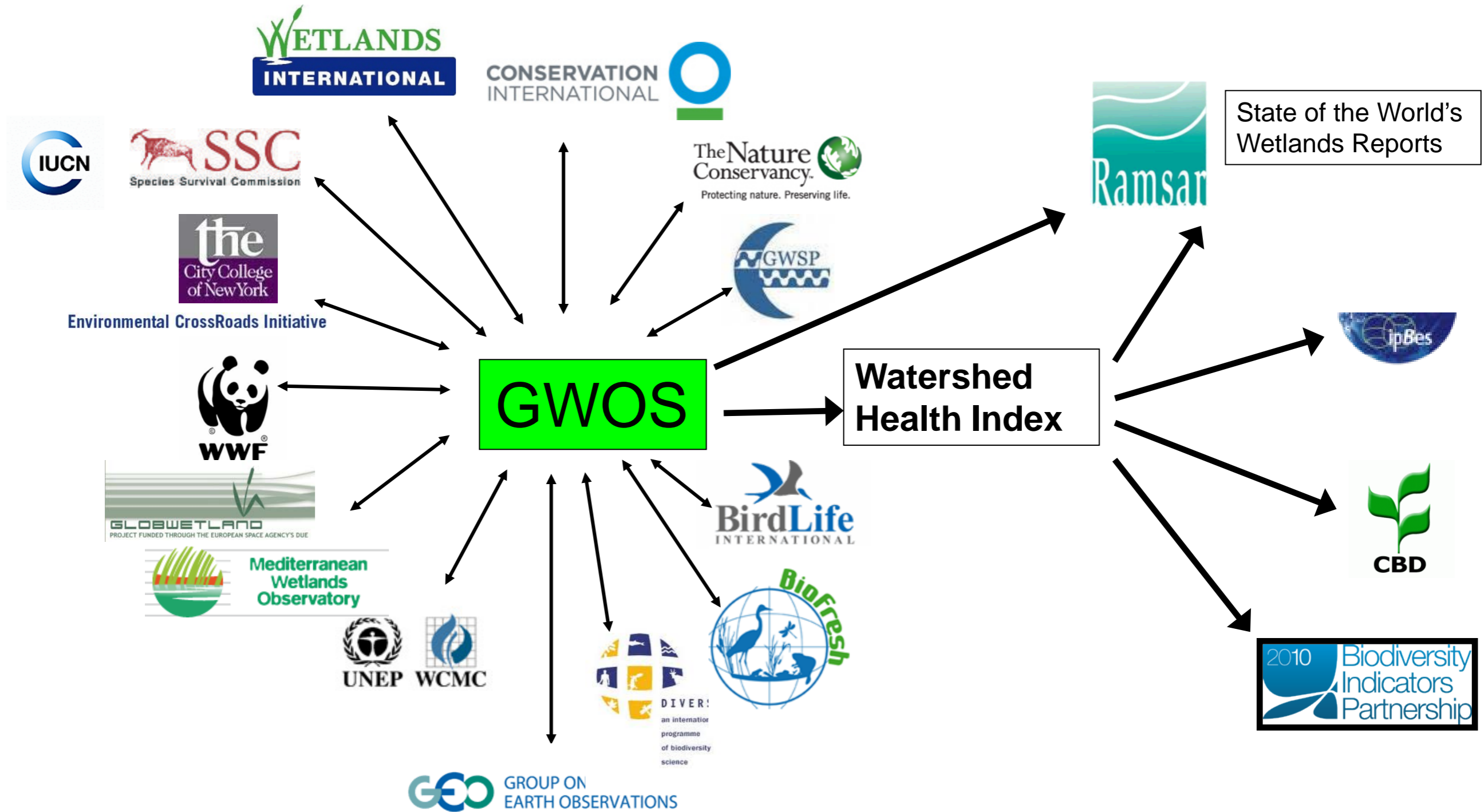


Bringing stakeholders together

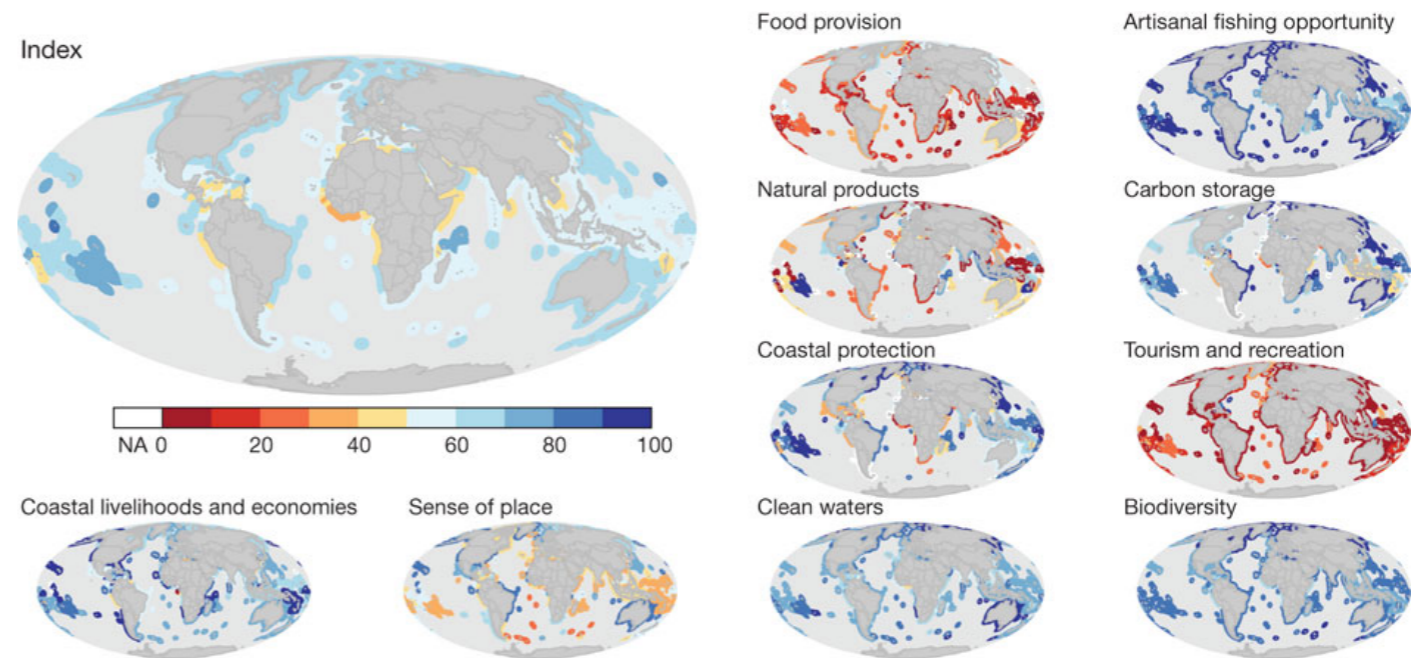


Watershed Health Index – based on the Ocean Health Index



Ocean Health Index - A group of leading scholars who have developed indicators to track the ocean's current and future health,

- Focusing on several broadly held **public goals** (benefits provided by a healthy ecosystem);
- **Take a similar approach for inland waters**; assessing benefits that align with the Millennium Ecosystem Assessment's categories of freshwater ecosystem services.
- Each ecosystem service benefit will be assessed in terms of its **current state** and its **expected state in the near future**.



BS Halpern *et al.* *Nature* **000**, 1-6 (2012)
doi:10.1038/nature11397

nature

<http://www.oceanhealthindex.org/>

Watershed Health Index – based on the Ocean Health Index

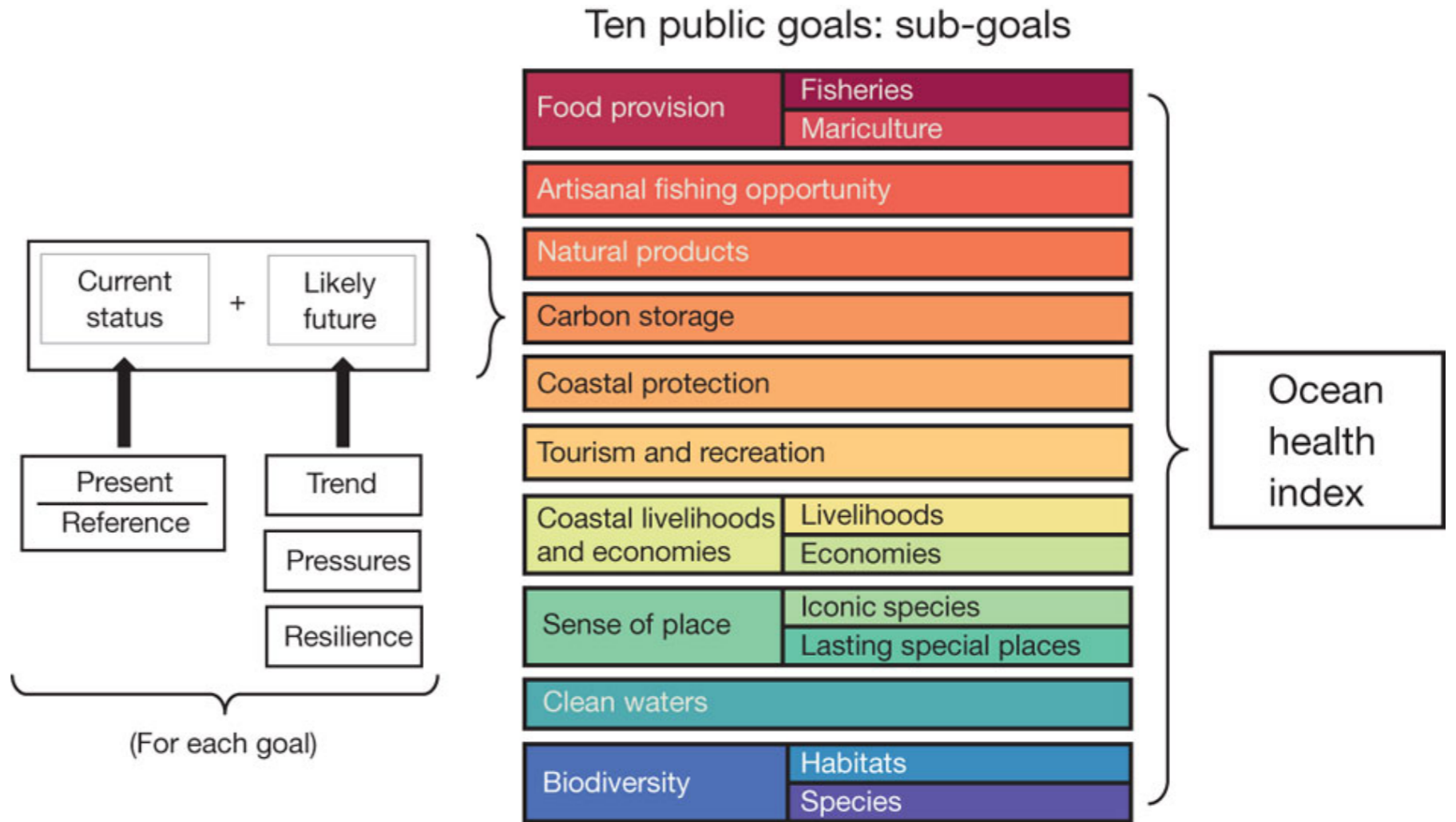


The **expected state** is measured by looking at three variables:

- **Recent trends in status** (whether the benefit has recently been declining or improving in status)

- **Vulnerability** to human pressures that could result in near-future declines in the benefit

- **Responses** (e.g. conservation and policy responses) that result in near-future improvements in the status of the benefit that will make it more resilient to pressures.



BS Halpern *et al.* *Nature* **000**, 1-6 (2012)
doi:10.1038/nature11397



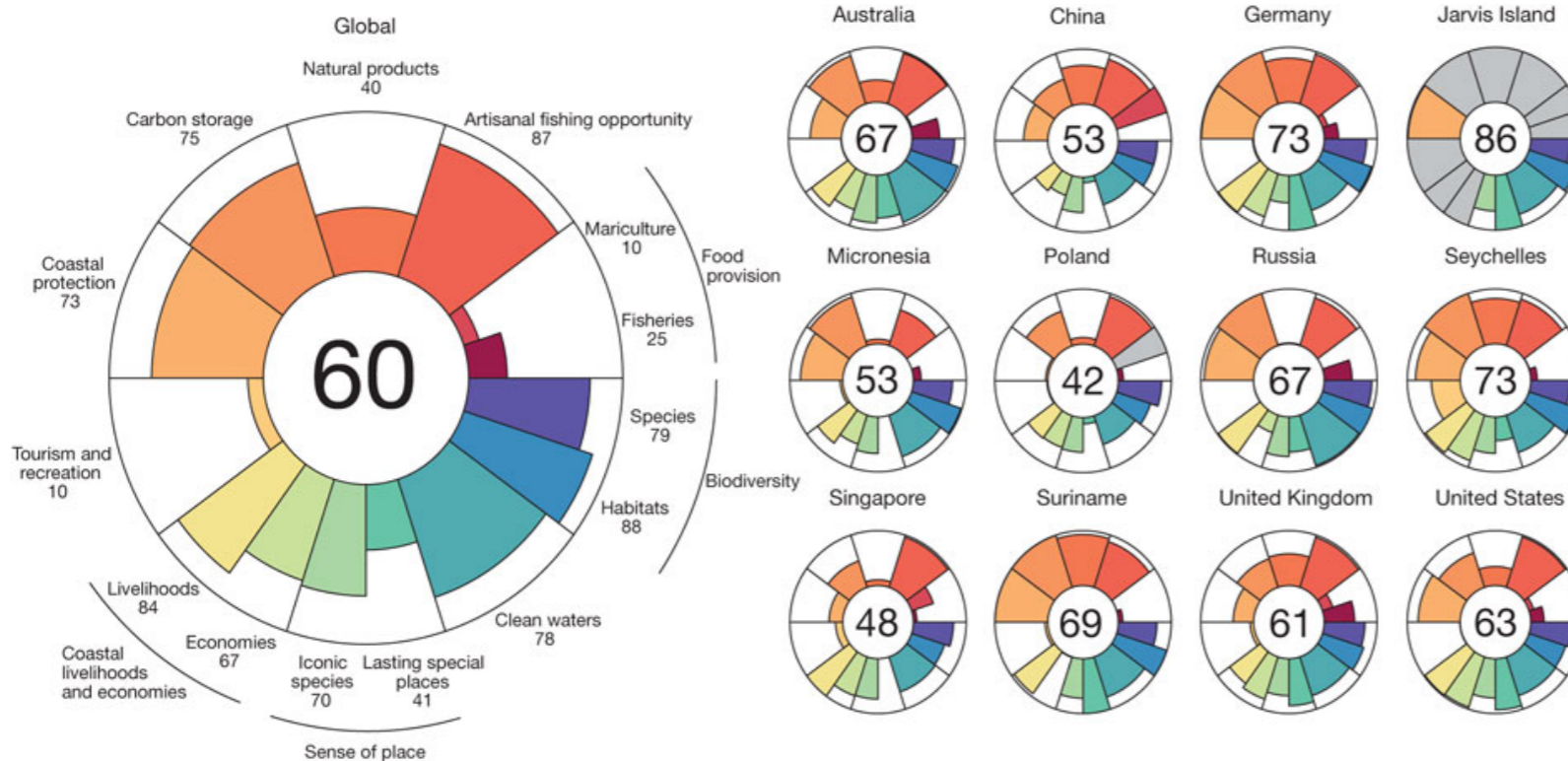
Watershed Health Index – based on the Ocean Health Index



Current status of each benefit and the parameters of change in that status (recent trends, vulnerability, and resilience) will be measured using a large and diverse set of indicators, including information on the ecological, biophysical, and socio-economic characteristics of the ecosystems.

i.e. Supported by the GWOS.

These indicators can be calculated at basin to global scales.



BS Halpern *et al.* *Nature* **000**, 1-6 (2012) doi:10.1038/nature11397

nature

A Watershed Health Index

- that brings experts together in a partnership;
- develops the GWOS data portal and a web presence for dissemination of information to stakeholders;
- supplies the information necessary for Ramsar's reports on the *Status of the World's Wetlands*;
- provides a tool for identifying priority regions for action, and for making recommendations on what actions are necessary to increase resilience of freshwater ecosystems, to support their biodiversity and the services they supply to human well-being;
- provides IPBES with a resource to achieve its mission to supply an interface between the scientific community and policy makers that aims to build capacity for and strengthen the use of science in policy making

