

Monday



Monday



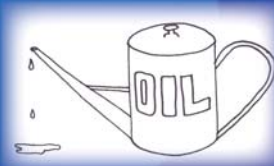
Monday



Monday



Tuesday



Tuesday



Tuesday



Tuesday



Tuesday



-20

river quality
points

You use
'CheepKleen'
- a powerful
detergent on
special offer at the
supermarket.

-20

river quality
points

Your whites are not
white enough so
you put in a jug of
bleach.

+20

river quality
points

You use an eco-
friendly detergent
that contains no
phosphates.

+30

river quality
points

You wash at 30°C using
an eco-friendly detergent
that in your A+ energy
and water efficiency
rated washing machine.

-30

river quality
points

You tip the oil directly
into the stream at the
bottom of your garden
- nobody will ever find
out.

-20

river quality
points

You tip the oil down
the drain beside your
house.

-10

river quality
points

You decide not to bother
with a service. The
extra pollutants the car
produces are washed into
the drains by rainwater.

+30

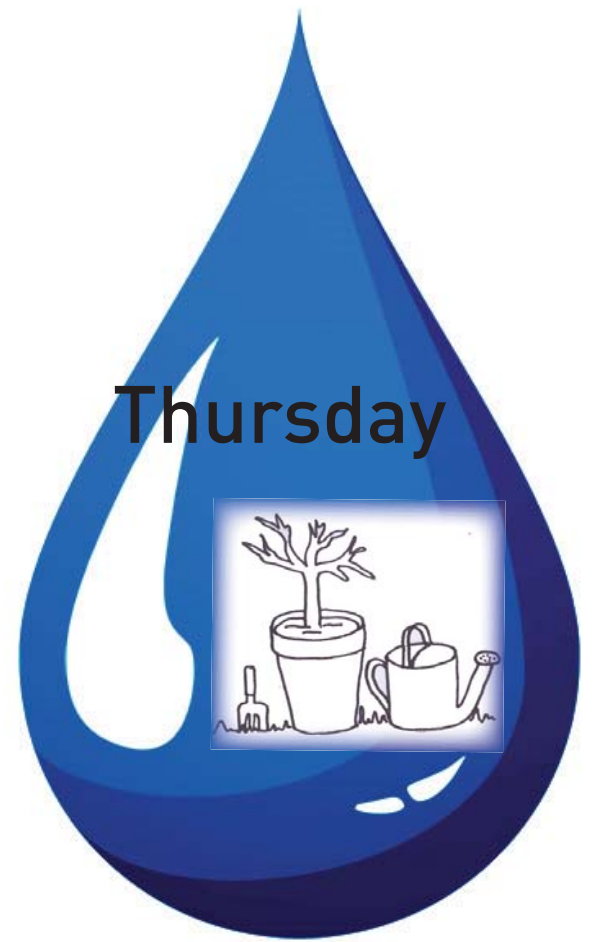
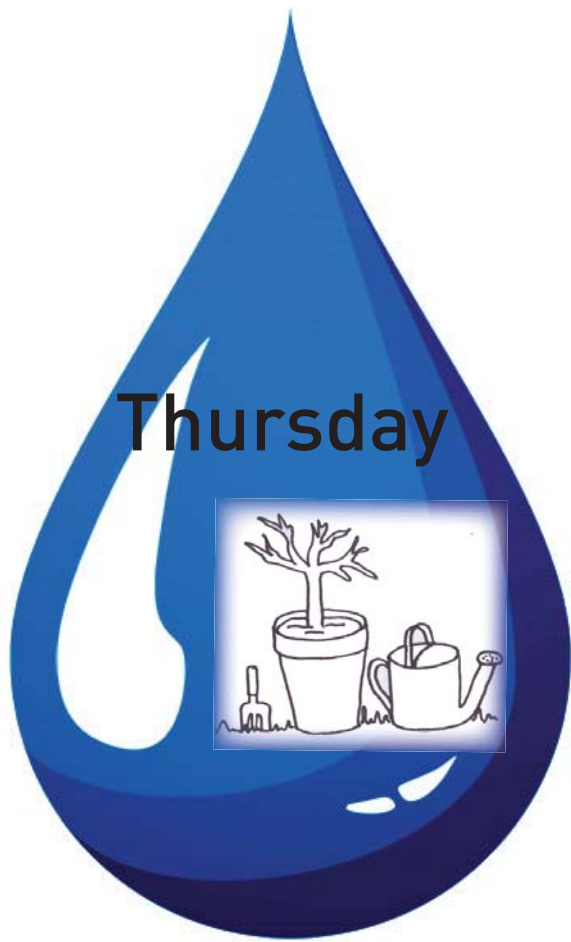
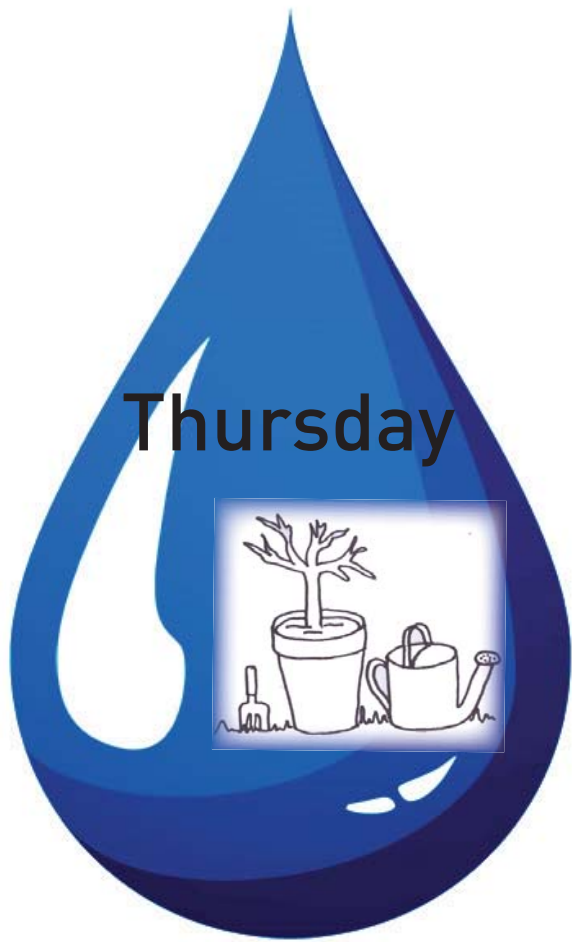
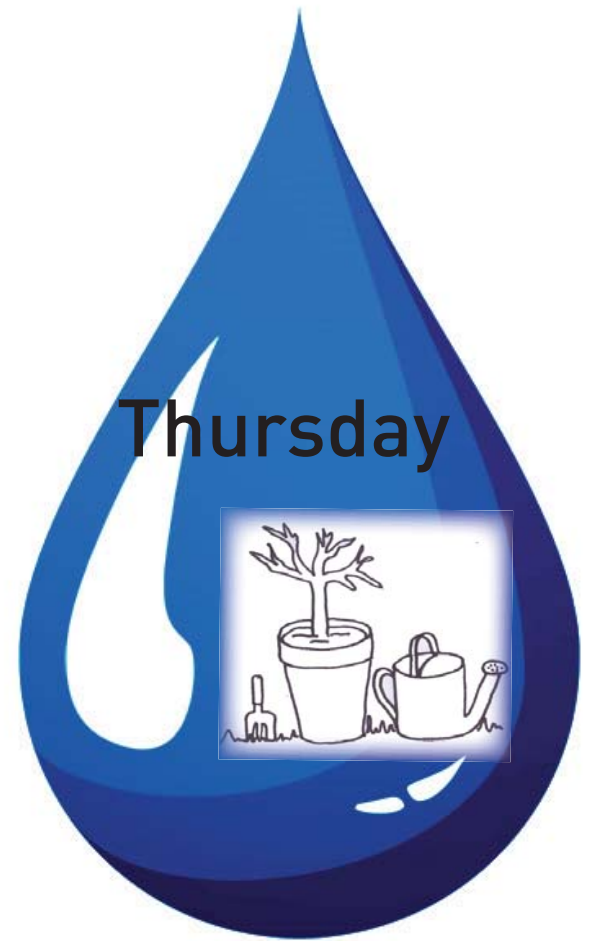
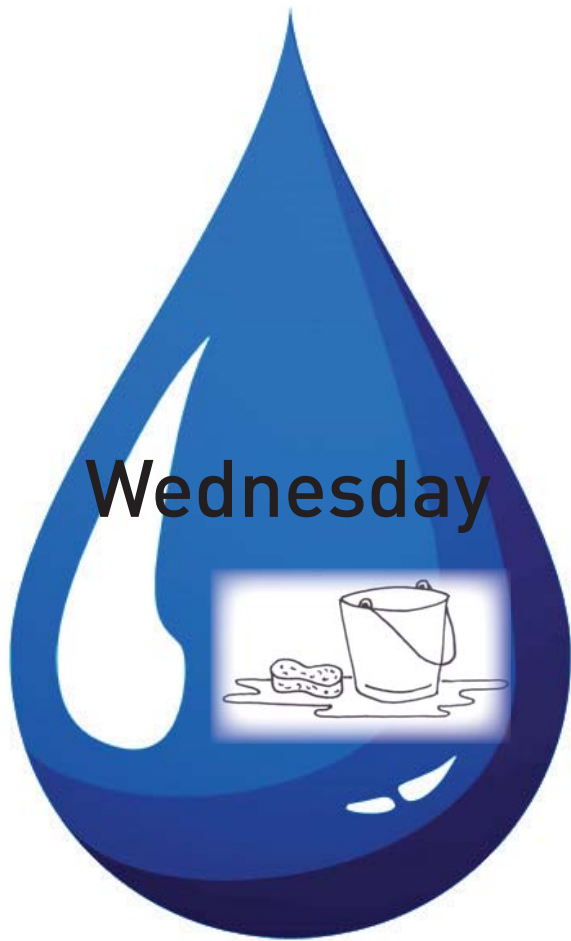
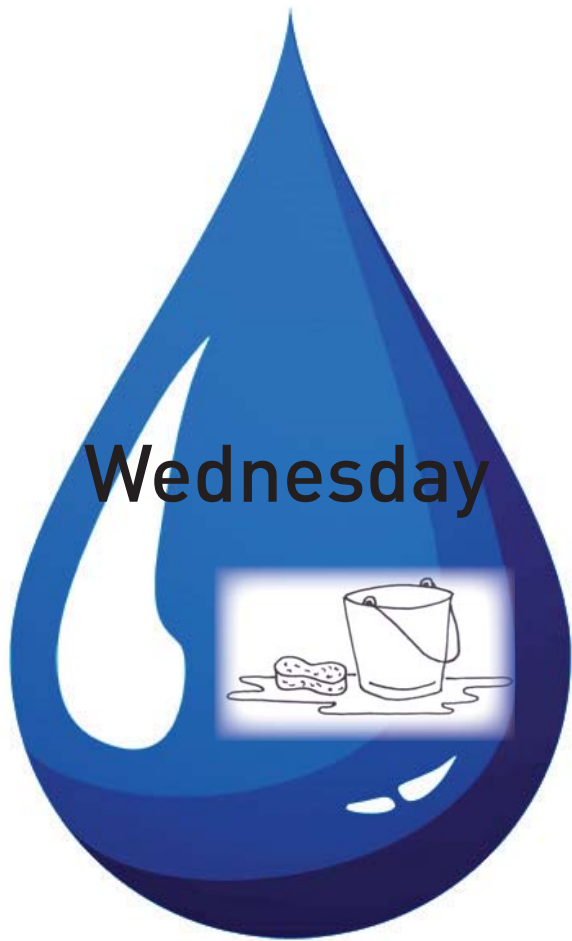
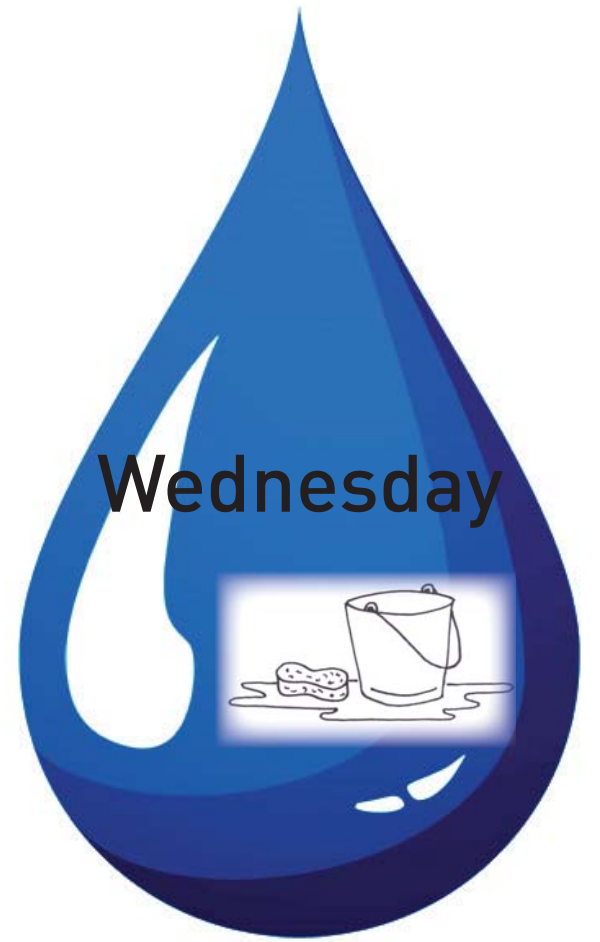
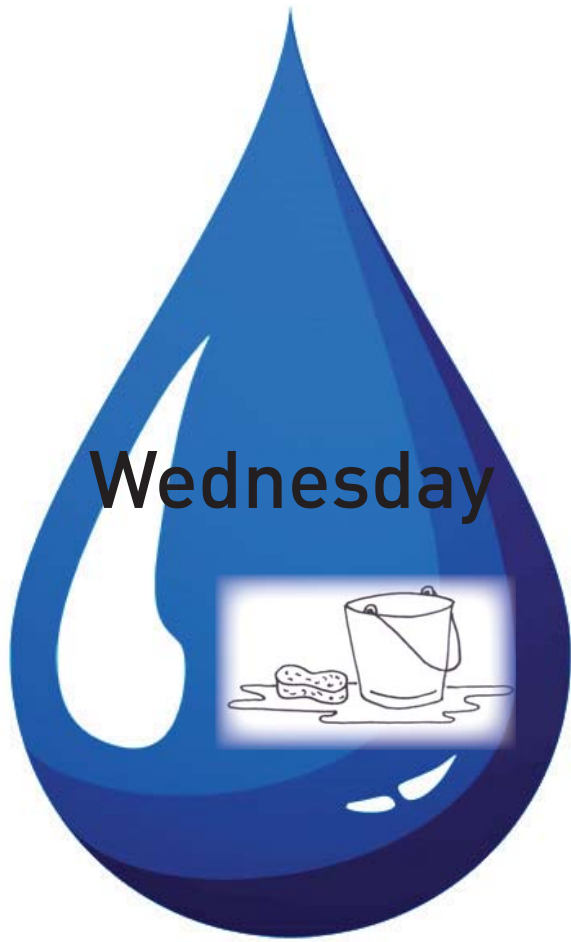
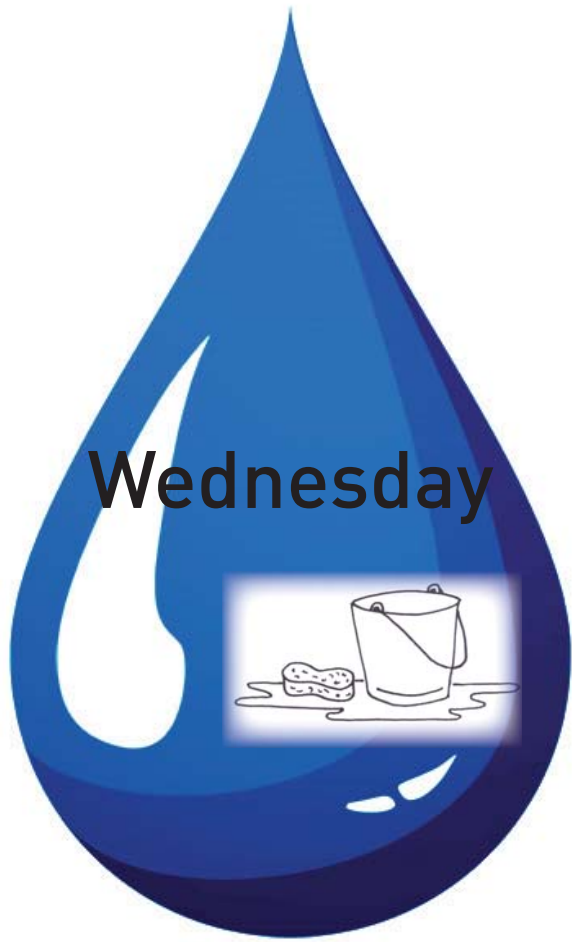
river quality
points

You carefully drain the oil
into a can. You contact
your local council who
tell you the nearest place
you can take your oil to
for recycling.

+10

river quality
points

You carefully drain the oil
into a can. You put the
can of oil in the general
rubbish bin at your local
tip.



-20

river quality
points

The kids use the hose for 20 minutes and a whole bottle of cheap car shampoo. They rinse all the foam into the drain by your house.

-10

river quality
points

The kids use the hose but switch it off when it is not needed. They use half a bottle of cheap car shampoo and rinse it down the drain.

+0

river quality
points

The kids use the hose but switch it off when it is not needed. They use an eco-friendly detergent that contains no phosphates.

+10

river quality
points

The kids use a bucket of water from the tap to wash the car. They use an eco-friendly detergent that contains no phosphates.

+20

river quality
points

The kids use a bucket of water from the rainwater butt to wash the car. They use an eco-friendly detergent that contains no phosphates.

-20

river quality
points

You use a peat-based compost and water in your plants with water from the hose. It has been dry, so you leave the lawn sprinkler on all day.

-10

river quality
points

You use a peat-free compost but water in your plants with water from the hose. It has been dry so you leave the lawn sprinkler on for an hour in the evening.

+20

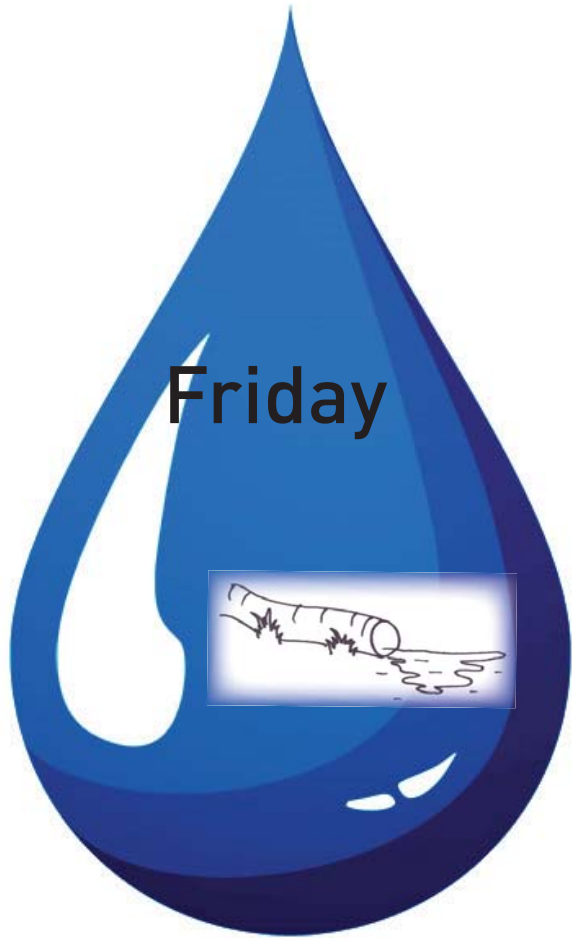
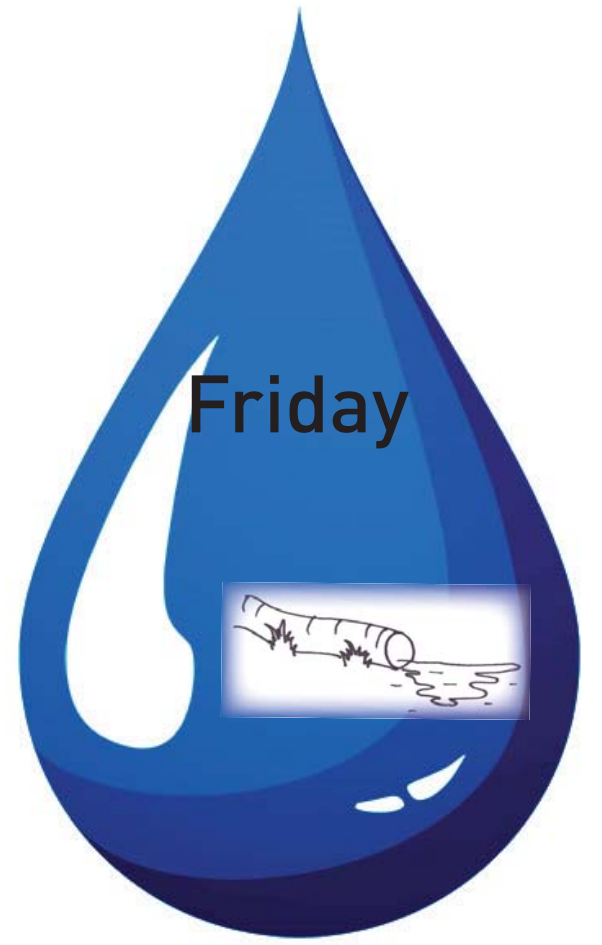
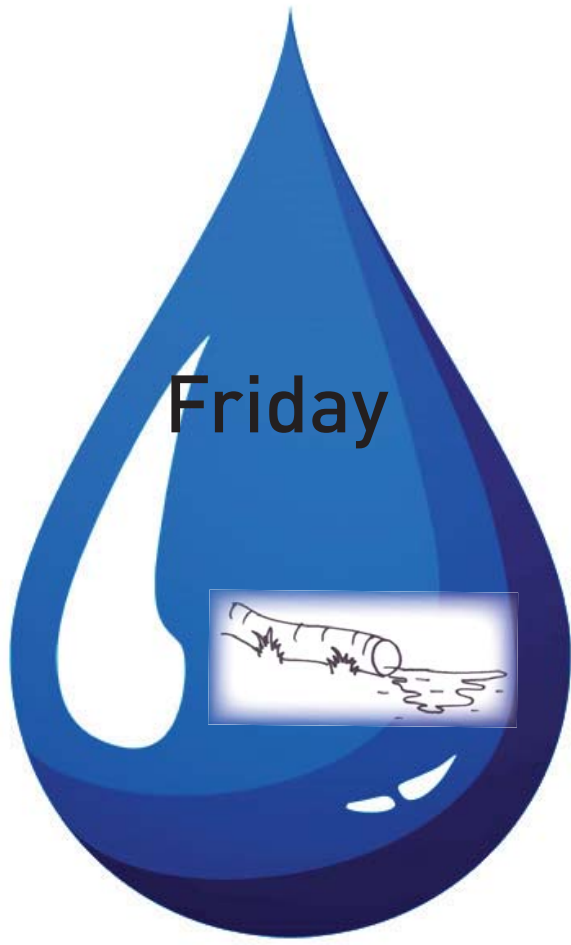
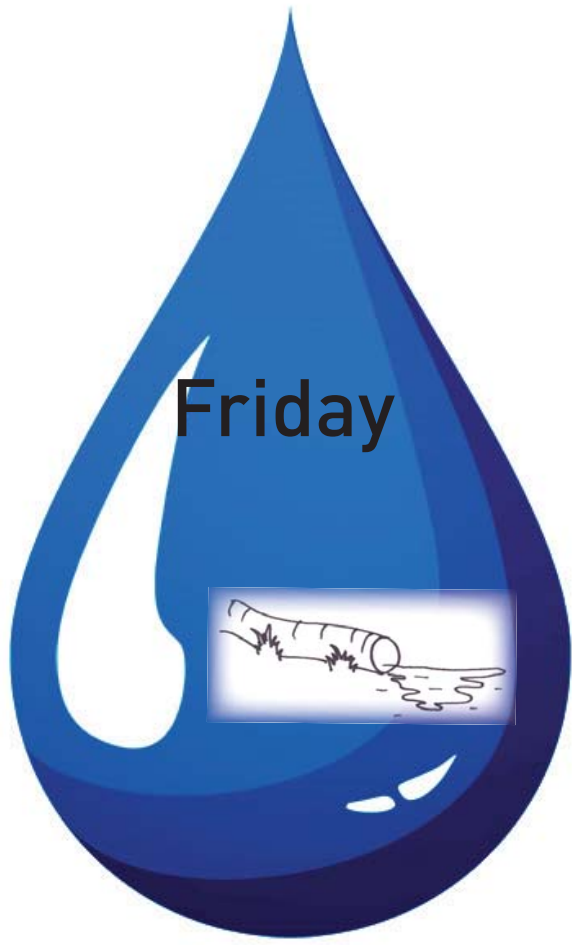
river quality
points

You use a peat-free compost from the local garden centre. You water the plants with water from the water butt in the evening.

+20

river quality
points

You use compost that you have made in your own compost bin from kitchen scraps. You water the plants with water from the water butt in the evening.



-20

river quality
points

You can't be bothered to do anything about your broken pipe. It won't hurt anybody.

-10

river quality
points

You are too busy to do anything about your broken pipe now but put it on your to-do list.

+10

river quality
points

The plumber will charge higher rates to come out at a weekend so you call him on Monday to fix the broken pipe.

+20

river quality
points

You call a plumber immediately to get the broken pipe fixed.

Biological



Number and type of creatures that live in the river.



Excellent

50 river quality points

Good

40 river quality points

Average

30 river quality points

Poor

20 river quality points

Awful

10 river quality points

Poor

20 river quality points

Excellent

50 river quality points

Good

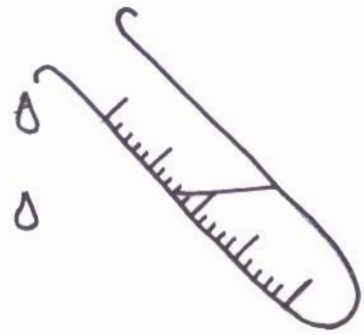
40 river quality points

Average

30 river quality points

Chemical

**Chemicals
that are in
the water.**



Excellent

**50 river quality
points**

Good

**40 river quality
points**

Average

**30 river quality
points**

Poor

**20 river quality
points**

Awful

**10 river quality
points**

Poor

**20 river quality
points**

Excellent

**50 river quality
points**

Good

**40 river quality
points**

Average

**30 river quality
points**

Ecological

**Amount of good habitat in
the river.**



Excellent

**50 river quality
points**

Good

**40 river quality
points**

Average

**30 river quality
points**

Poor

**20 river quality
points**

Awful

**10 river quality
points**

Poor

**20 river quality
points**

Excellent

**50 river quality
points**

Good

**40 river quality
points**

Average

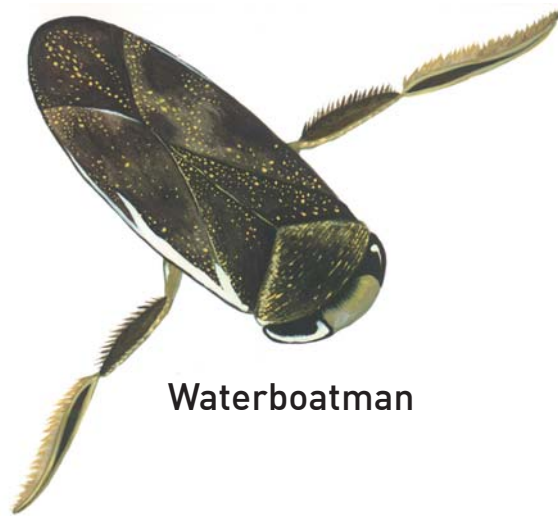
**30 river quality
points**

River Woosh quality scale



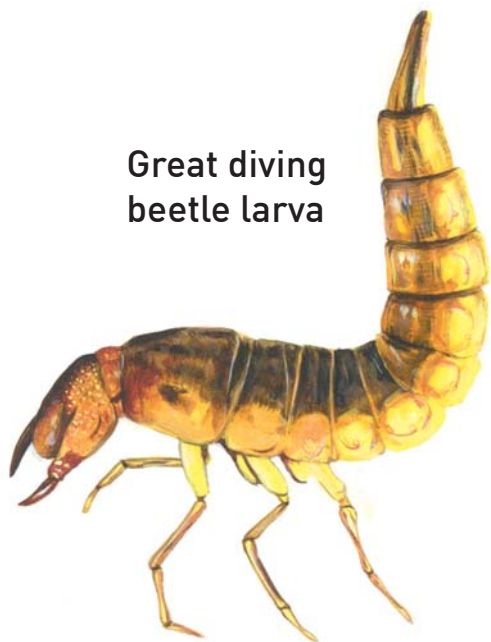
Cased caddisfly

What a beautiful river. All sorts of wildlife will thrive here - excellent!



Waterboatman

The river quality here is good but could be better.



Great diving beetle larva



Mayfly nymph

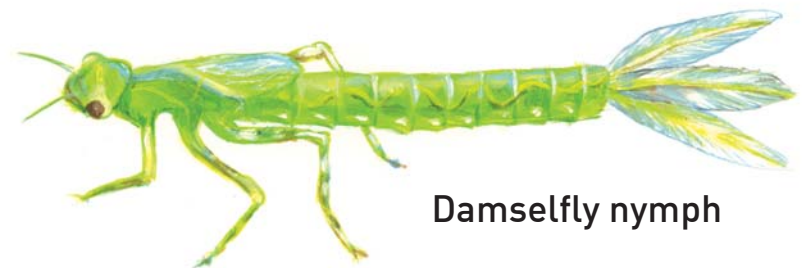
300
290
280
270
260
250
240
230
220
210
200
190
180
170
160
150
140
130
120
110

The more healthy the River Woosh is, the more wildlife it will attract. As you go up the scale different creatures will be found in the water in greater numbers. In turn these attract more fish, birds and mammals.

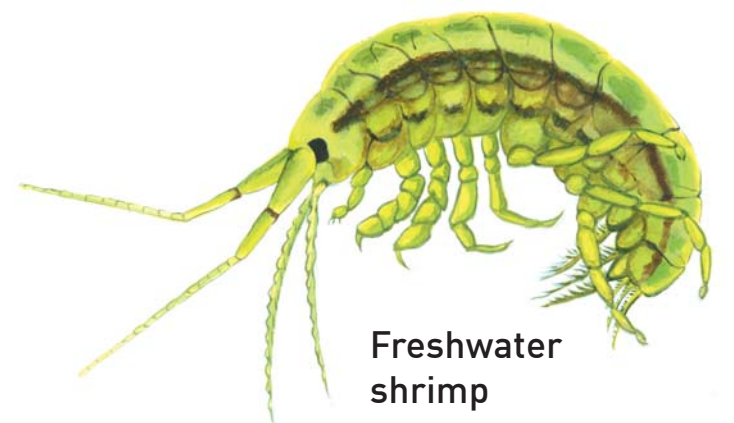


Great diving beetle

The river is very good. Keep doing as you are and soon it will be excellent.

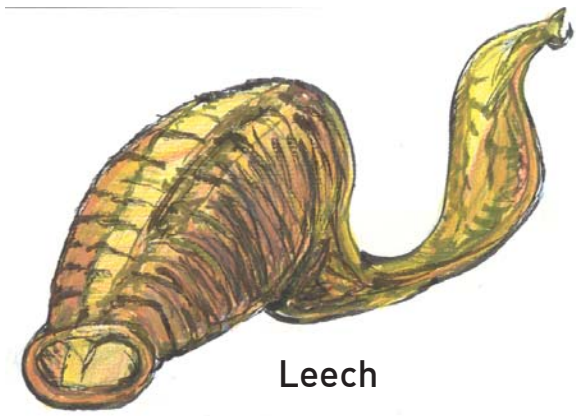


Damselfly nymph



Freshwater shrimp

An average river still attracts some wildlife but you need to change your ways to improve.



Leech

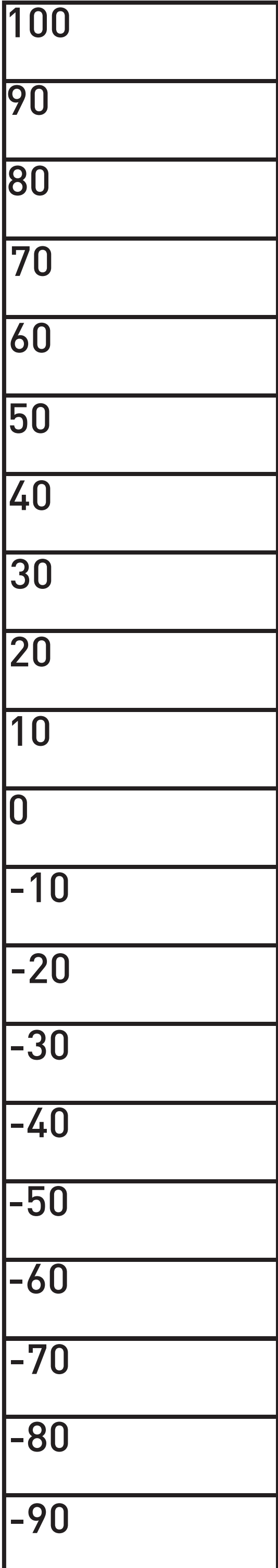
The river quality is poor but can be improved to attract more wildlife.



Ramshorn snail



Water flea



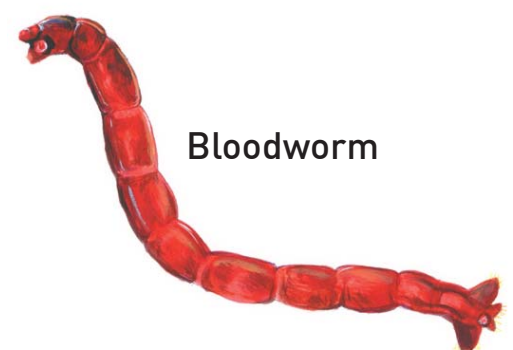
Water louse

The river is below average. Think about ways you might improve the river before it gets worse.



Pond snail

The river quality is very poor. Drastic action is needed to improve the river for wildlife.



Bloodworm

The river is in an extremely poor condition. Little can survive here.