

世界濕地日 2009
上游、下游
濕地連繫你我



World Wetlands Day 2009

UPSTREAM DOWNSTREAM

Wetlands Connect Us All

甚麼是江河流域？ What Is a River Basin?

江河流域是河流所覆蓋的地方，是人類的文明起源。長久以來，人類聚居於河流兩岸，獲取穩定的食水供應，發展農業和社會。河流也是重要的運輸通道，對社會和經濟的發展有著很大的貢獻。

A river basin is the total area of land drained by a river. Human civilisation was originated along river basins. Long ago, human settlements and societies have been developed along rivers, in order to obtain freshwater and utilise the fertile soil for farming. River is also an important medium for transportation which are important to social and economic development.



河流是運輸的主要渠道
River is an important medium for transportation



種植農作物需要使用大量淡水
Freshwater is consumed for irrigation



農民利用耕地種植蔬菜
Farmers grow vegetable on farmlands



濕地為我們供應稻米、魚類等糧食資源
Wetlands provide us with food, such as rice and fishes

香港常見河溪上游至下游的縮影



Summary of a river model from upstream to downstream often found in Hong Kong

- 1 河溪兩旁的植被可以保護土壤及維持水質。
Vegetation along river and stream can protect soil and maintain the water quality.
- 2 河溪包含各種生態環境，孕育了很多動植物，形成豐富的生態網。
A wide variety of ecosystems can be found along river and stream. They provide breeding or growing places for many animals and plants which form complex ecological webs.
- 3 流水經過引水道流至水塘收集。
Water flow to reservoirs through catchments.
- 4 沖積平原和氾濫平原可把雨水暫時儲存。
Rain water is temporarily stored in the alluvial plain and floodplain.
- 5 河溪提供水源灌溉農田。
River and stream provide water for irrigation.
- 6 河流沖積物在下游沉積，形成氾濫平原。由於沉積物含有機物，因此氾濫平原的土壤肥沃，適合耕作，往往被改造為良田。昔日的元朗絲苗，或今天的西洋菜，都是這類濕地產物。
Floodplain is formed by sediment deposition at the downstream. Since the sediments contained organic matter, soil in the floodplain is more fertile and suitable for farming. Therefore, floodplain is often turned into agricultural land. Yuen Long See Mew Rice in the past, and Water Cress that can be found today are well known products of such wetlands.
- 7 河流下游的地勢平坦，也有改為魚塘用途。
The topography of the downstream is gentle, some areas have been converted into fishponds.
- 8 有人在河岸居住。
Some people live along the riverside.
- 9 大部份工業都需要水。
Most industries need water.
- 10 河流是消閒和郊遊，例如垂釣、觀鳥、攝影的好去處，亦有社會經濟效益。
River is a good place for leisure, such as fishing, bird watching and photo taking. It has social-economic benefits.
- 11 河口的紅樹林和泥灘為生物提供了重要的棲息和繁殖環境。
Mangrove and mudflat at river mouth are breeding and nursery grounds for wildlife.
- 12 河流可作為水上交通運輸要道。
River can be an important medium for transportation.
- 13 大部份河溪都已劃入郊野公園範圍內，水源得到保護，市民也可以欣賞到河溪的自然環境。
Most of the rivers and streams in Hong Kong are within country parks, besides water resources are being protected, people can also appreciate their natural beauty.
- 14 污水經過處理後才排放，以減少對環境的影響。
Waste water is discharged after treatment to minimise the impact on the environment.



誰掌管江河流域？

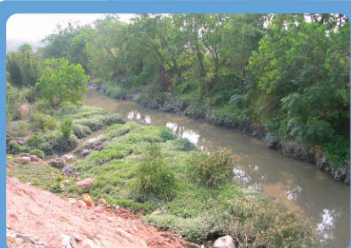


Who Manages River Basin?

江河流域的環境好與壞，反映著人類如何使用河流資源，例如過度蓄水或耗用水資源，水土流失，引入外來物種，過度捕魚，污染水源，以及城市化。我們的生活習慣和決定，影響着江河流域的環境，同樣江河流域的狀況，也會影響我們。

我們需要關心、關注和參與河流和其他濕地的管理和可持續發展，令濕地得到完善的管理，使環境更健康。

What happens in the river basin, for good or bad, is closely affected by how we treat the natural resource, for instance, over-storage or wasteful use of water, human activities causing soil erosion, introduction of exotic species, over-fishing, water pollution, and urbanisation. Our habits and decisions are affecting the river basin. Similarly the environment of river basin is affecting us too. Our care, awareness and participation in the management and sustainable development of river will ensure that wetlands are well managed, leading to a healthy environment.



天然溪流被填土
Natural stream was filled by mud



紅樹被砍伐
Mangrove were felled



交通發展對紅樹林環境構成壓力
Transportation development may cause adverse effect on mangrove habitat



渠道化工程改變原有的河溪生態環境
Channelisation altered the original stream environment



河岸已發展成都市
Riverside was developed to urban area



河流小知識



River Tidbits

一條河流會流經多個國家，例如中國的瀾滄江流入越南後被稱為湄公河，印度的布拉馬普得拉河的上游就是中國的雅魯藏布江。河流覆蓋的地方，會有機會涉及多方的利益，有些國家或地區會應用多方的協作方案，以管理江河流域，例如目前較廣泛使用「整合型江河流域管理」或「整合型水資源管理」等。

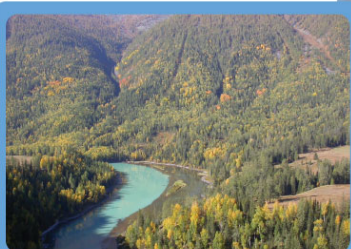
It is common that a river flows through many countries. For instance, the downstream of Lancang River located in China is named Mekong River in Vietnam; the upstream of Brahmaputra River in India is named Yarlung Zangbo River in China. Some of the river basins involve transboundary benefits, therefore, international management strategies which involve cooperation of relevant countries or regions applied, for example, "Integrated River Basin Management" and "Integrated Water Resource Management" are strategies which have been widely adopted by many countries or regions.



位於中國西藏的雅魯藏布江
Yarlung Zangbo River in Tibet, China



位於青海省曲麻萊附近的黃河和長江的發源地
Qumalai locates near the origin of Yellow River and Yantze River in Qinghai Province



中國唯一通往北冰洋的河流——新疆額爾齊斯河，發源於阿勒泰地區的阿爾泰山，經俄羅斯鄂畢河注入北冰洋
Irtysh River is the only river that run into the Arctic Ocean - It originates from the Altay Mountain in Altai region where water flows via Ob River to the Arctic Ocean



位於香港大嶼山的大蠔河
Estuarine area of Tai Ho River at Lantau island



註：本圖節錄自中國地圖 Note: This map is extracted from the map of China

保護濕地

由我做起



Wetland Conservation Starts with Me

珍惜並循環再用食水，例如使用洗米水灌溉植物。

Cherish and reuse water. For example, re-use the water after washing rice for watering plants.

當洗手、刷牙、洗衣物和清洗蔬菜時，不要持續開啟水龍頭。

Do not leave the water tap running while you are brushing your teeth, washing your hand, clothes and cleaning vegetables.

收集衣物或碗碟一起清洗。

Collect sufficient load of clothes or dishes before washing.

以淋浴取代浸浴，淋浴時應用低流量的蓮蓬頭（花灑）。

Take shower instead of bath and use a low-flow shower head.

節約能源

Save energy

積極實行「環保4R」：減少使用 (Reduce)、重覆使用 (Reuse)、循環再造 (Recycle)、代替使用 (Replace)。

Implement Environmental 4 Rs : Reduce, Reuse, Recycle, Replace.

關注水資源運用和環境保護的議題，並積極發表意見。

Share your opinion on wise use of water resources and related environmental issues.

向親友講述江河流域的重要性

Share your knowledge about the importance of river basin with your family and friends

