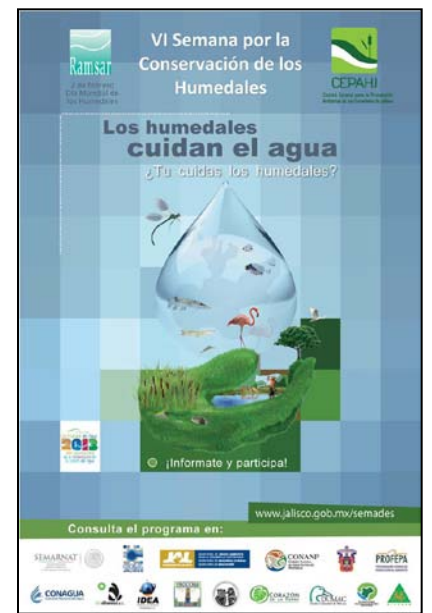
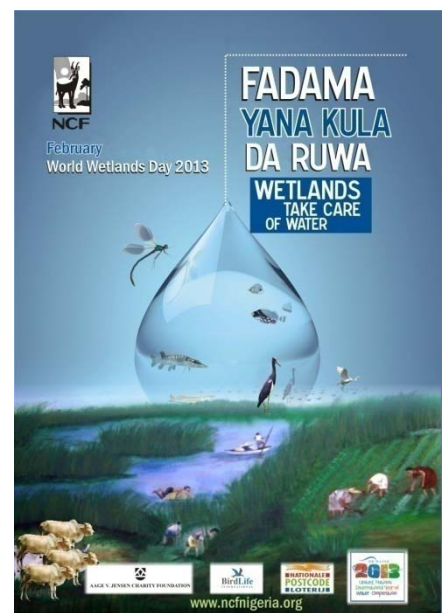


DOC SC46-19 WWD themes 2014 & 2015



World Wetlands Day 2014

2014

UN - International Year of Family Farming

Lead: **FAO** with **CGIAR** (IWMI) and others



2014 WWD - Wetlands and Agriculture





Action requested of SC46:

**Endorse the theme of *Wetlands and Agriculture*
for World Wetlands Day 2014**

World Wetlands Day 2015

- ✓ 2015 is a COP year
- ✓ In 2008 (COP10) and 2012 (COP11) WWD and COP themes linked
- ? In 2015 - link WWD & COP?



WWD 2015

COP12?

WETLANDS & URBANIZATION



- Res. X.27 *Wetlands and urbanization*
- Res. XI.11 *Principles for the planning and management of urban and peri-urban wetlands*
- By COP12:
 - Briefing Note
 - Ramsar Technical Report
- On-going project in West Africa
- City accreditation system



WWD 2015



COP12?



- Resolution VIII.18 *Invasive species and wetlands*
- CPs - significant area of concern for wetlands worldwide
- STRP *Guide to guidance on IAS for wetlands*
Top Priority
- Secretariat currently engaging with the UN Inter-Agency Liaison Group on IAS



WWD 2015/ COP12 Theme – Biodiversity?

WWD 2010

WETLANDS, BIODIVERSITY & CLIMATE CHANGE



R A M S A R C O N V E N T I O N O N W E T L A N D S

WETLAND BIODIVERSITY - WHERE ARE WE NOW?



WETLAND SPECIES UNDER THREAT

(data from the IUCN Red List, BirdLife International, and Wetlands International)

What do we mean by biodiversity? For many people, biodiversity is about species, about tigers, polar bears, hippos, and frogs. Less well understood is that biodiversity is not just about species – it's also about ecosystems and genes and thus so too is our World Wetlands Day theme.

All species are parts of functional units: ecosystems, dynamic complexes of plant, animal and micro-organism communities, and their non-living environment (like water, soil, minerals, etc.) interacting as functional units.

There is plenty of evidence that modern living is causing unparalleled loss of species at the global level and that climate change is making this situation much worse. The box opposite shows what we can say in general about wetland dependent species loss. Conclusion? Wetland species are in big trouble. And if wetland species are in trouble, so too are wetland ecosystems, and this is of serious concern for all people, however wealthy or poor they are and wherever they live.

« The world will not reach the target it has set for addressing biodiversity loss. This am-

WATERBIRDS

- Of the 826 waterbird species listed by BirdLife International, 17% are considered threatened.
- Of the 1,138 waterbird populations whose trends are known, 41% are in decline.
- Waterbirds are more threatened than all birds and their status has deteriorated faster in the last 20 years.

- Overall, amphibians are fading badly: including terrestrial (mainly forest) and fresh water species, globally 29% of species are currently threatened.
- At least 42% of all amphibian species assessed are declining in population; less than 1% of species show population increases.

TURTLES

- 72% of the 90 species of fresh water turtles that have been assessed are globally threatened.
- 6 of the 7 species of marine turtles are listed as threatened. While spending much time at sea, marine turtles use coastal wetlands for breeding and feeding.

WETLAND-DEPENDENT MAMMALS

- 38% of the fresh water-dependent species that have been assessed are globally threatened; these include groups such as manatees and river dolphins in which all species assessed are listed as threatened.
- Wetland mammals are more threatened than terrestrial mammals (21% threatened) and waterbirds.

CROCODILES

- 43% of crocodilians are threatened although this is based mostly on assessments carried out more than 10 years ago. Recent data (since 2000) indicates that 3 out of 5 species assessed are threatened (60%).

FRESH WATER FISH

- 33% of the world's fresh water fish species have been assessed as threatened.

AMPHIBIANS

- 26% of the world's fresh water amphibian species are considered threatened.

CORALS

- 27% of coral-building species that have been assessed are considered threatened.

Action requested:

- Linking WWD and COP theme?
- WWD 2015 theme? COP theme?



No urgency to decide
– wait until SC47?