

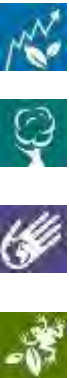
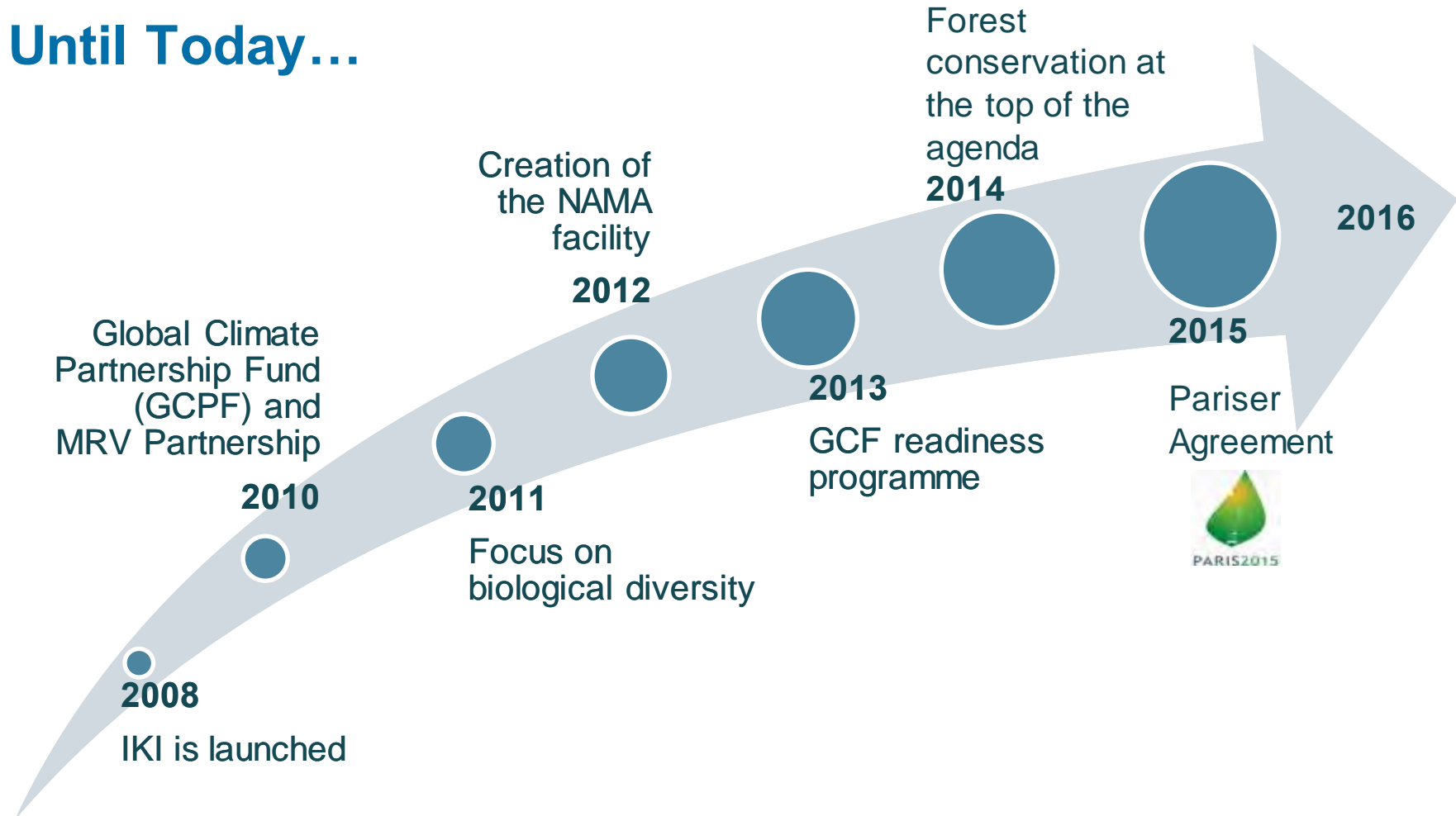


# The International Climate Initiative

## (IKI)



# From its Establishment... Until Today...





# Overview of Portfolio and Priority Funding Areas

- Development / implementation of (I)NDCs, NAMAs, LCDS / Green Economy, MRV systems / transparency, finance
- Renewable energies, energy efficiency, transport, resource efficiency, urban development



## Mitigation

- Development / implementation of NAPs / NAPAs
- Ecosystem-based adaptation (EbA)
- Management of climate risk, e.g. insurance



## Adaptation

- REDD+ business models and results-based finance
- REDD+ strategies and governance, data systems and safeguards
- Restoration of forest landscapes



## REDD+

Implementation of Strategic Plan 2011-2020:

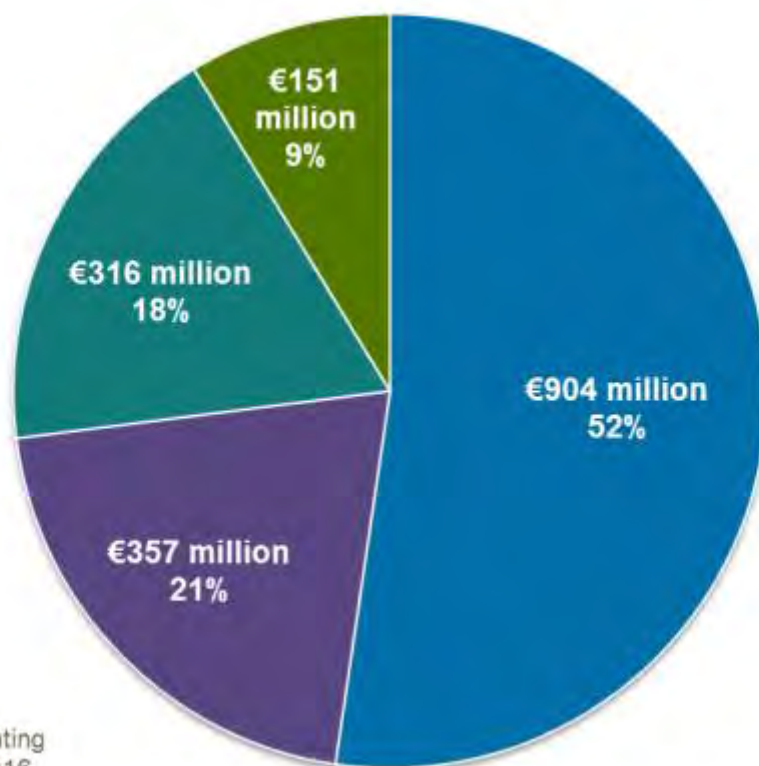
- Terrestrial and marine protected areas, Mainstreaming into other sectors
- Financing mechanism, planning processes



## Biodiversity



## Volume of funding according to support area (2008-2016)\*



Mitigating greenhouse gas emissions



Adapting to the impacts of climate change



Conserving natural carbon sinks/REDD+

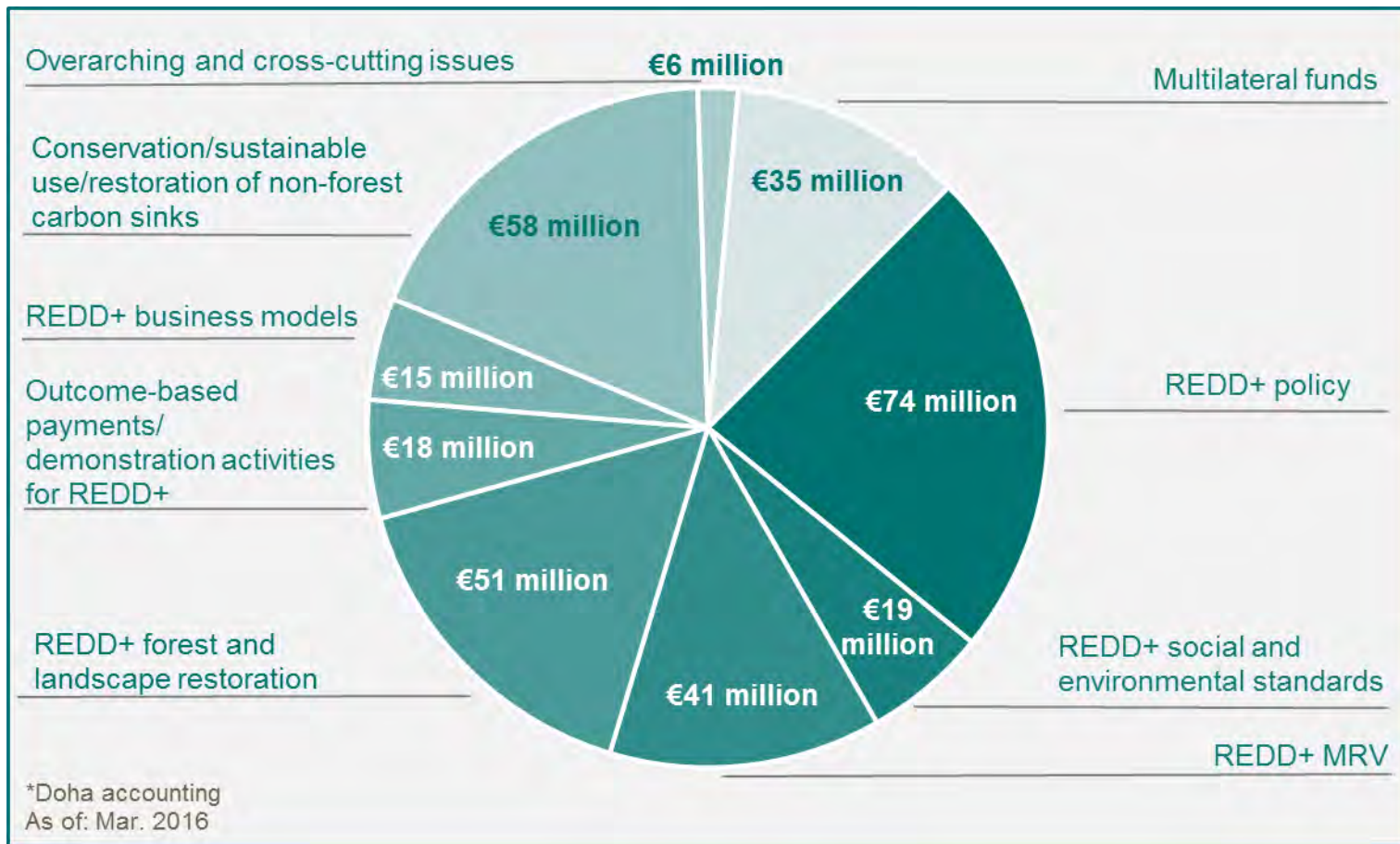


Conserving biological diversity

\*Doha accounting  
As of: Mar. 2016



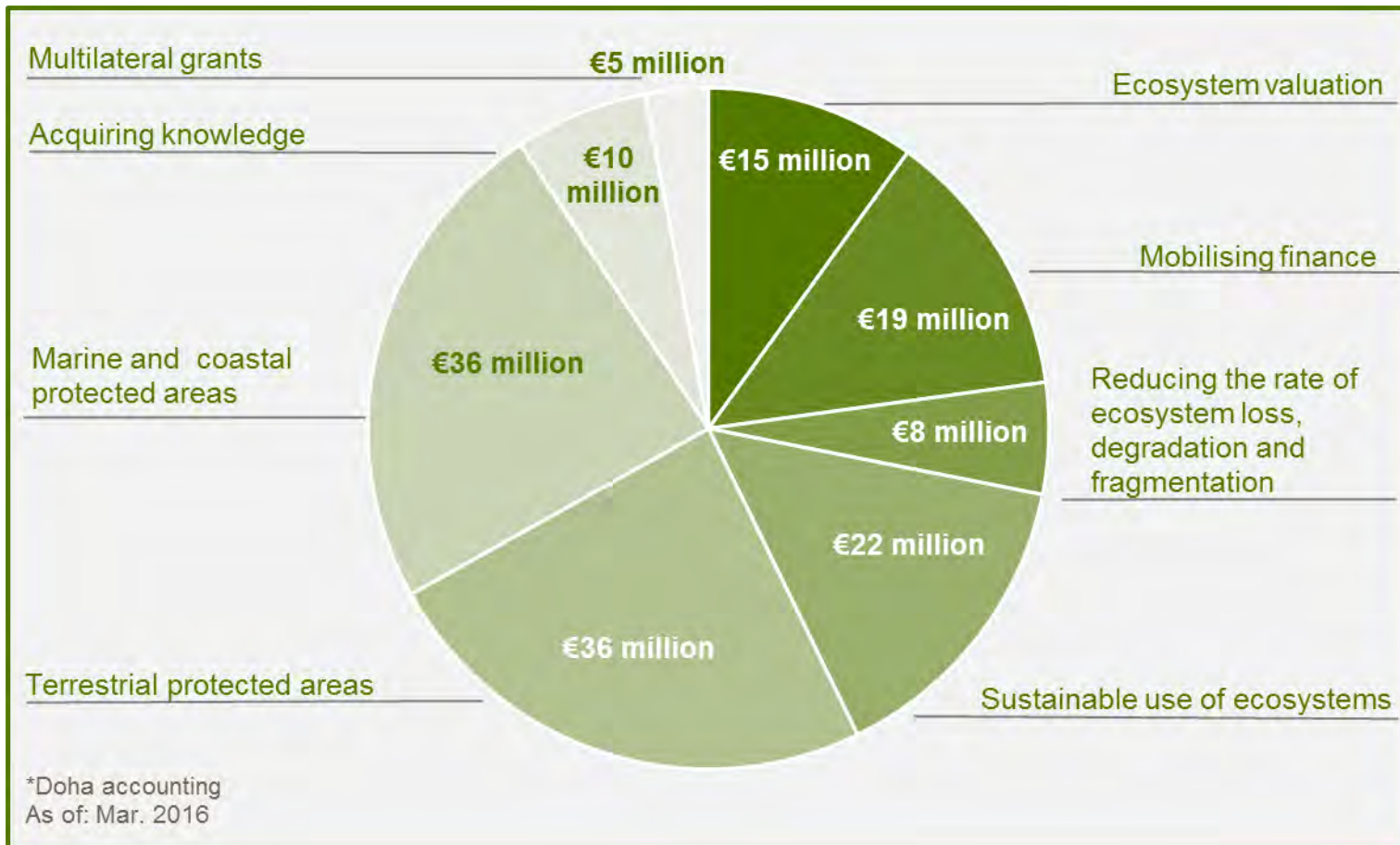
# Conserving natural carbon sinks / REDD+ (2008-2016)\*











# Conserving biological diversity (2008-2016)\*





# Peatlands

## CURRENT PROJECTS

-  - Rewetting and sustainable management of peatlands in Ukraine
-  - Rehabilitation of peatlands in Belarus
-  - Conservation and sustainable use of peatlands in Turkey
-  - Rewetting of peatlands for the mitigation of climate change impacts in Russia
- In planning: Peatlands in ASEAN countries

## IN GENERAL

- the portfolio is still small; scope for further projects



**Thank you for your attention!**

**[www.international-climate-initiative.com](http://www.international-climate-initiative.com)**

**E-Mail: [programmbuero@programmbuero-klima.de](mailto:programmbuero@programmbuero-klima.de)**



**[@iki\\_bmub](https://twitter.com/iki_bmub)**